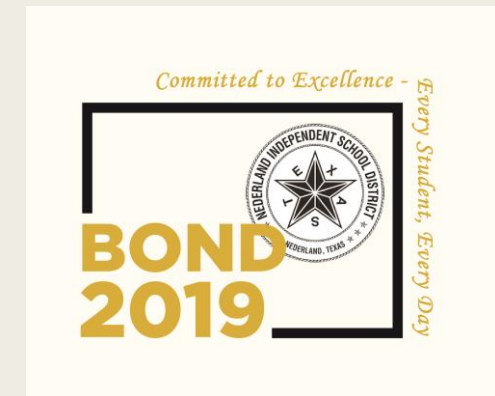


# NEDERLAND INDEPENDENT SCHOOL DISTRICT

## BOND 2019

A BOND PROGRAM WITH A  
FOCUS ON TEACHING AND LEARNING AND  
PREPARING OUR FUTURE LEADERS



# VISION



The vision of Nederland Independent School District is to **provide an environment where learning is the highest priority** and students **demonstrate civic responsibility,** **prepare for post-secondary education and careers,** **and engage in positive personal development.**

# MISSION



The mission of Nederland Independent School District is to **provide an educational environment** that will enable all students to **develop essential academic skills and knowledge for a lifetime of learning** and to prepare students to be **responsible, contributing citizens in a diverse and changing world.**

# 2018 – 2019 DISTRICT GOALS



1. Nederland ISD will seek continuous student performance improvement by focusing on research-based strategies for teaching and learning, utilizing multiple methods to measure student success, and providing quality academic programs for all students.
2. Nederland ISD will provide facilities, equipment, and grounds that are safe, accentuate security, clean and promote community and school pride while planning for the future with the completion of a facilities review and identifying a community committee for the purpose of studying future district facility needs.
3. Nederland ISD will promote parental involvement, school and community partnerships, and an organized volunteer program; all of which are key elements to student success.

# DISTRICT GOALS CONT'D



4. Nederland ISD will recruit and retain qualified, quality personnel and provide meaningful professional development that supports the mission and goals of the school district.
5. Nederland ISD will provide a quality counseling program that supports the emotional and mental health, as well as, the educational needs of the district students.
6. Nederland ISD will ensure that all graduates are college and/or career ready.
7. Nederland ISD will integrate technology, online learning, and project based learning to prepare students for real-world experiences.

# What is a school bond election?



- School districts hold bond elections to seek approval from voters to sell bonds for the purpose of generating revenue.
- **Bond revenue can only be used for new construction, renovations to existing facilities, and other approved items associated with providing school district facilities.**

# Bond Revenue



- The revenue from bond sales cannot be spent on personnel or operating costs such as utility bills, supplies, fuel, instructional materials, or other costs associated with daily operations of the school district.

# Bond Revenue



- Bond revenue and passing a bond issue have no impact on personnel salaries, benefits, and potential future raises.
- Salaries and benefits are paid from maintenance and operations funds.
- M&O funds are generated from state, federal, and local revenue sources that are required to be separated from bond revenue.



# How long will the bonds be financed?



School district bond projects may be financed up to 40 years. However, **Nederland ISD has selected a 25 year payment program to reduce the amount of interest paid.**

# The Community Survey



- A Community Survey was conducted by a third party to identify if voters in Nederland ISD would approve the proposed projects.
- The survey was conducted both by phone and via internet survey between January 15 and January 24, 2019.
- **All projects received a favorable rating at more than twice the margin-of-error for the survey – which indicates strong support.**
- **The survey received 1,018 verified registered voter respondents and has a 95% confidence factor with a 2.96% margin of error.**

# Community Survey



All Options garnered sufficient support to exceed 2xMOE in aggregate. The only project with potential risk is the 08 – Athletic Program especially with the high number of individual “No”, but still had sufficient support (pre-weighted analysis)

Projects	% Net Approval	For	Against	% Gross Approval	Rejected 1-2	Accepted 1-2
Opt01 - New HS (\$82.7M)	63.6%	637	103	62.6%	-19	0
Opt01 - New 4 ES (\$93.2M)	63.9%	645	103	63.4%	-38	0
Opt02 - ES Upgrades (\$49.1M)	81.5%	396	90	77.6%	-17	2
Opt03 - HS Upgrades/ CTE (\$38.6M)	80.7%	406	97	76.7%	-15	4
Opt04 - MS Upgrades (\$11.1M)	88.7%	895	114	87.9%	-22	3
Opt 05 - Technology Initiative (\$4.8M)	89.1%	892	109	87.6%	-16	13
Opt 06 - Safety & Security (\$3.4M)	94.6%	958	55	94.1%	-8	28
Opt 07 - Stadium Upgrades (\$4.5M)	70.4%	712	299	69.9%	-161	0
Opt 08 - Athletic Program (\$16.9M)	60.5%	608	397	59.7%	-247	0

Orange = Within the Margin of Error (MOE) - Red = Below the Margin of Error (MOE)

% Net Approval = Yes/(Yes+No) % Gross Approval = Yes/(Yes + No + Neutral / No Reply / Unsure)

N = 1,018

# What are the major projects included in this bond?



## Proposition A

- New Nederland High School at current site **\$82.7M**
- Upgrades and new construction to all four elementary schools **\$49.1M**
- Upgrades and improvements to both middle schools **\$11.1M**
- Districtwide technology improvements/one-to-one initiative **\$4.8M**
- Safety and security improvements at all campuses **\$3.4M**

## Proposition B

- Bulldog Stadium upgrades and improvements **\$4.5M**

# Community Survey Summary



• <b>New High School</b>	<b><u>\$82.7M</u></b>	Approval	63.6%
• <b>Elementary Schools (Additions and Renovations)</b>	<b><u>\$49.1M</u></b>	Approval	81.5%
• <b>Middle Schools</b>	<b><u>\$11.1M</u></b>	Approval	88.7%
• <b>Technology Initiative</b>	<b><u>\$4.8M</u></b>	Approval	89.1%
• <b>Safety and Security</b>	<b><u>\$3.4M</u></b>	Approval	94.6%
• <b>Stadium Improvements</b>	<b><u>\$4.5M</u></b>	Approval	70.4%

# Why did the CAC recommend building a new high school?



- The CAC worked for months studying the condition of each campus and in the final analysis decided that it made the most sense to build a new high school rather than putting more than \$38M to renovate the school.
- **Renovations needed were so extensive that students would have to be removed from the building during renovation at a cost of \$5M for a portable building campus for a year or more.**
- Building a new campus was thought to be a better long-term investment and would provide classrooms, technology, labs, and career and technology education spaces to meet the needs of today's high school students.

# Why is 5th grade moving to elementary campuses?



Transitioning 5th grade to elementary campuses serves multiple purposes, but the two primary reasons for this grade-level restructuring is:

- Having 5th grade at elementary campuses is better for students academically and socially. 5th grade in high performing school districts are usually structured at the elementary level which allows grade-level teachers to interact more directly with previous grade-level teachers, and to have staff development activities in a more coherent sequence.
- With the age and classroom limitations of the existing middle schools, moving 5th grade to elementary campuses increases the number of classrooms at each middle school, thus requiring less investment in older, middle schools.

# New Nederland High School

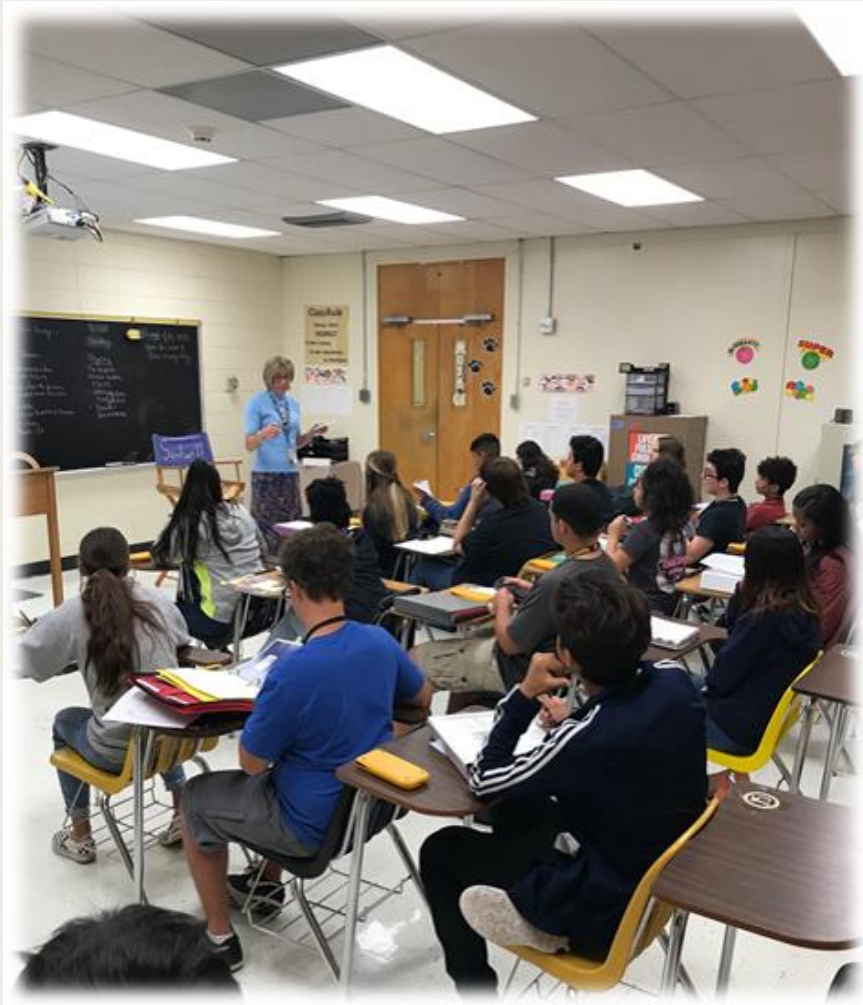
## \$82.7M



- Built at same location (behind PAC center)
- Approximately 272,000 square feet (61 educational spaces)
- Designed learning environment for modern teaching practices
- Replacement practice fields
- New CTE building
- New competition gym
- Practice gym & gym support spaces (locker rooms & storage)
- Administration & counseling offices
- Library
- Cafeteria and kitchen serving areas
- Performing arts spaces not included in current PAC
- Improved traffic flow
- Support spaces (storage, mechanical, computer server spaces, etc.)
- Large group instruction spaces
- Performing Arts Center will remain in current location



# Nederland High School





# High School Potential

*\*These are images from previous IBI Group projects. The design has not yet been determined.*





# High School Potential

*\*These are images from previous IBI Group projects. The design has not yet been determined.*



# Central Middle School – \$5.7M



- Furniture and equipment to support flexible teaching and learning
- Additional and updated restrooms
- Additional and updated science labs
- Improved drop-off/pick-up and parking
- Improved front office space
- ADA updates for swimming pool



# C.O. Wilson Middle School - \$5.4M



- Furniture and equipment to support flexible teaching and learning
- Additional and updated restrooms
- Additional and updated science labs
- Improved drop-off/pick-up and parking
- Improved front office space

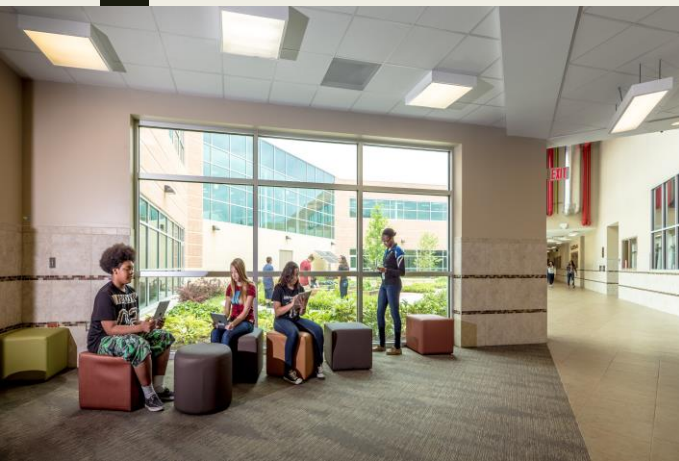
# Current Middle Schools





# Middle School Potential

*\*These are images from previous IBI Group projects. The design has not yet been determined.*



# Helena Park Elementary - \$12M



- Additional 20 classrooms (music, science labs, individualized learning spaces)
- Renovate and additional restrooms for students and faculty
- ADA modifications to front office space
- Furniture and equipment to support flexible teaching and learning
- Expanded gym
- Expanded cafeteria and kitchen
- Improved drop-off/pick-up and parking
- Additional storage
- New PA system
- Updated playground
- Plumbing improvements



# Highland Park Elementary - \$12M



- Additional 22 classrooms (music, science labs, individualized learning spaces)
- Renovate and additional restrooms for students and faculty
- ADA minor modifications to front office space
- Furniture and equipment to support flexible teaching and learning
- Expanded gym
- Expanded cafeteria and kitchen
- Improved drop-off/pick-up and parking
- Additional storage
- New PA system
- Updated playground
- Plumbing improvements

# Hillcrest Elementary - \$12M



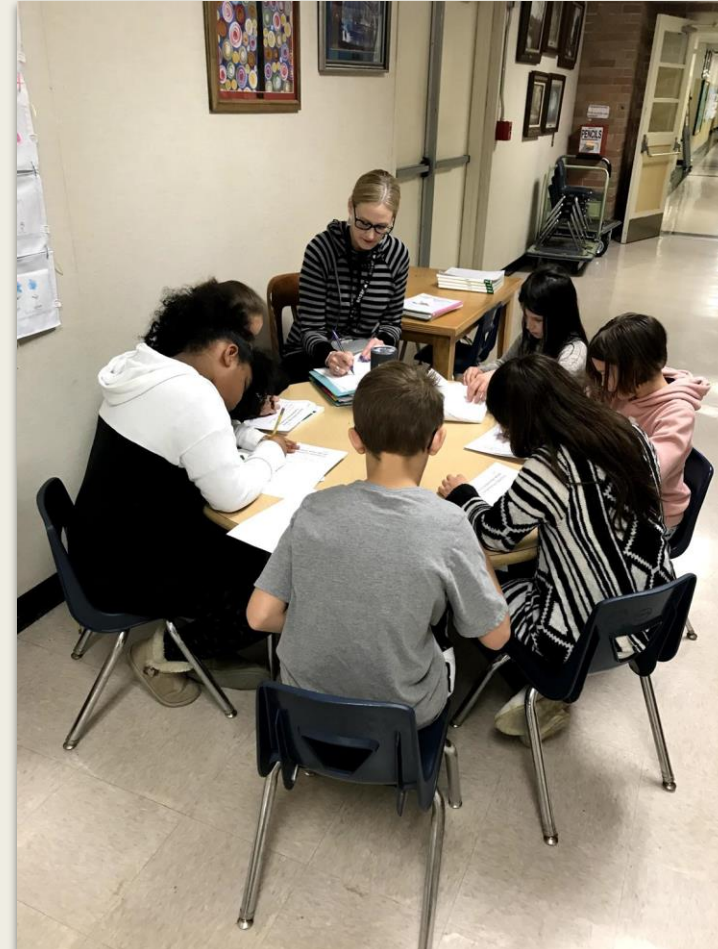
- Additional 18 classrooms (music, science labs, individualized learning spaces)
- Renovate and additional restrooms for students and faculty
- ADA minor modifications to front office space
- Furniture and equipment to support flexible teaching and learning
- Expanded gym (connect to main building)
- Expanded cafeteria and kitchen
- Improved drop-off/pick-up and parking
- Additional storage
- New PA system
- Updated playground
- Plumbing improvements

# Langham Elementary - \$13.1M



- Additional 9 classrooms (music, science labs, individualized learning spaces)
- Renovate restrooms for students and faculty
- ADA minor modifications to front office space
- Furniture and equipment to support flexible teaching and learning
- Expanded gym
- Expanded cafeteria and kitchen
- Improved drop-off/pick-up and parking
- Elevator
- New PA system
- Updated playground

# Elementary Campus





# Elementary School Potential

*\*These are images from previous IBI Group projects. The design has not yet been determined.*



# Technology Initiative

\$4.8 million



- 1:1 devices districtwide
  - *A 1:1 initiative is to put a device into the hands of each and every student during school hours. These plans are usually a few years in the making, involve technology and teacher oversight committees and detailed roll out plans.*
- Fiber optics connectivity
- Robust infrastructure to handle all “traffic” at each campus
- Improved access points

# Safety and Security Initiative

\$3.4 million



- Modifying hardware on classroom and egress doors
- Additional security cameras
- Additional card reader hardware
- Impact resistant glass

# Bulldog Stadium Improvements

\$4.5 million



- ADA required updates
- Additional and updated restrooms
- Modified seating
- Artificial field turf
- New press box



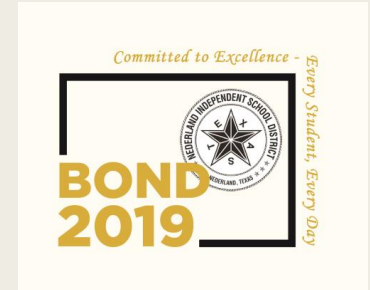
# The taxable value of your home



**The taxable value of your home is not the appraised value.**

**As an example:** A home with an appraised value of \$100,000 has the \$25,000 state exemption deducted from the amount and the remaining value is the actual taxable value = \$75,000.

# How much tax increase will the typical homeowner experience if the bond passes?



**The largest projected tax increase would be 33 cents to the overall school tax rate.** For a homeowner with a \$125,000 home, after exemptions, this will mean an increase in school taxes of **\$27.50 dollars per month.**

**This maximum increase is projected for tax year 2020. After that year, the tax rate is projected to be slightly lower each year thereafter.**

# If the bond issue passes, will school taxes increase for senior citizens?



**No.**

Taxpayers who are age **65 and older**, and have filed the appropriate tax exemption, **will not see an increase in the school taxes they pay on their home.**

The “65 and older” exemption freezes the amount of school taxes they pay at the time the exemption is filed. If you do not know if you are receiving the exemption, please contact the Jefferson Central Appraisal District.

# Financial Assumptions

Dusty Traylor



- **Current credit ratings** - The bond rating is basically a corporate entities credit score, just like our personal credit score. A 'AAA' bond rating (from state of Texas) is the highest available bond rating out there. These bonds (NISD's) should have a 'AAA' rating along with NISD rating of AA3 which is very high and in comparison with peer districts.
- **Possible projected interest rates** – This bond scenario shows very conservative figures of 4.25%. Current interest rates are 3-3.25%. The interest rates we are talking about as it relates to sale of these bonds are with a fixed rate of interest. If from now and 15 years from now, the interest rates in the greater bond market increase, it will not impact these bonds. We will sell these bonds with at a fixed rate over the life of the amortization. If the interest rates go down, the district will have a call option to refinance. Nederland ISD has historically done this in previous bonds.
- **Possible projected pay off of 2019 Bond** – The possible projected pay off of the total package is the year 2045.

# Who is IBI Group?



- + Full bond planning services for over **24+ districts** in southeast Texas
- + Successful bond elections – Pasadena ISD – 30+ years – **100% success rate**
- + Local firm with a big global reach – **we are education specialists**
- + Leaders in designing **next generation learning environments**



# Who is IBI Group?

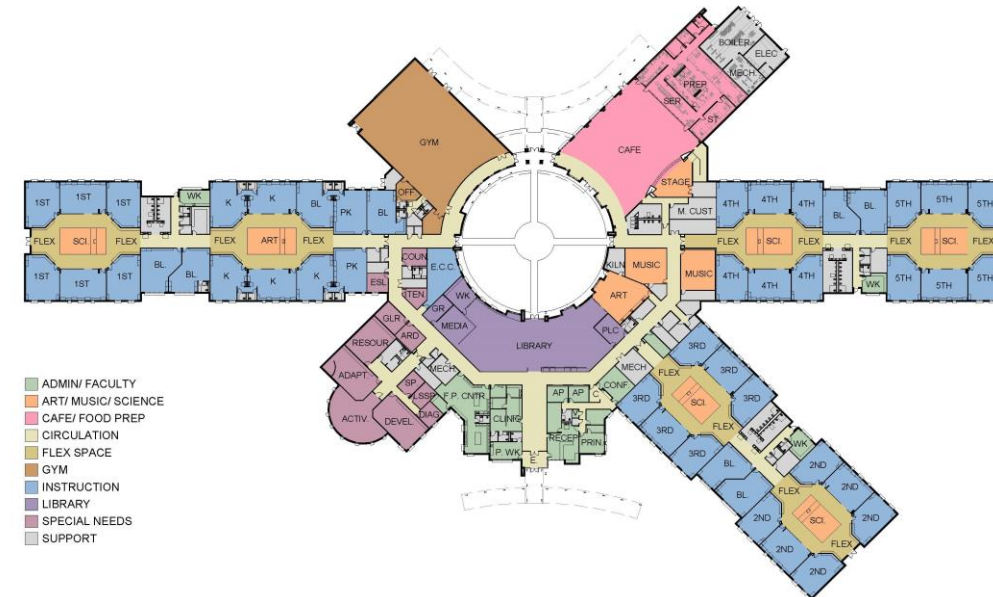
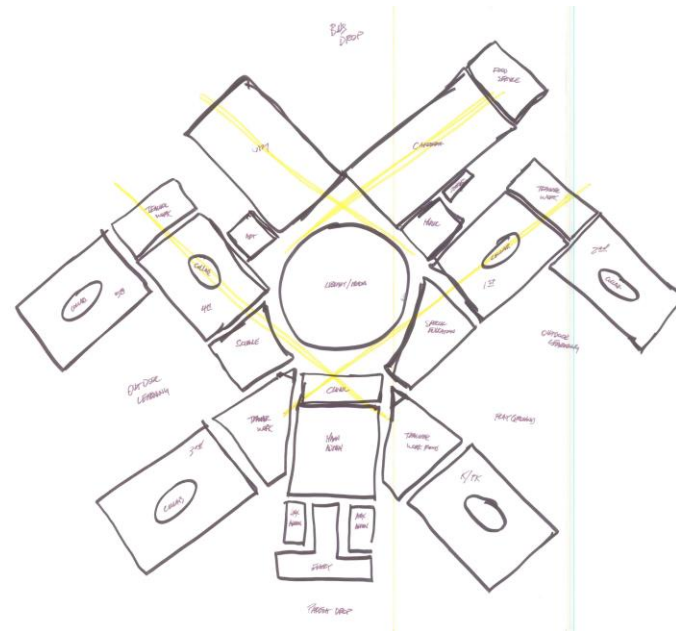


- + Full-Service Architectural Firm: Pre-Bond Planning Through Warranty
- + Inclusive Planning and Design Process
- + Thoughtful Solutions to Complicated Problems



# Who is IBI Group?

+ Committed to listening and learning





# Who is IBI Group?



+ Through effective collaboration **amazing** things can happen





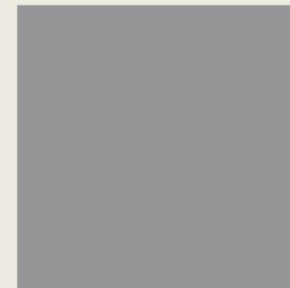
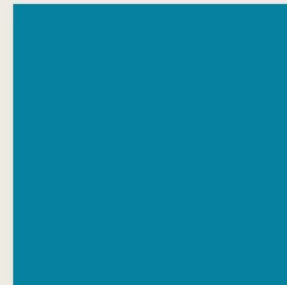
# Who is IBI Group?



- + Trust, coordination and communication
  - Firm commitment through life of the project
  - Strong consultant and contractor relationships



# Who is IBI Group?



# Who is IBI Group?



**35+**

REPEAT SCHOOL DISTRICTS

**800+**

EDUCATIONAL PROJECTS  
ACROSS THE STATE OF TEXAS

**300+**

STATE AND NATIONAL  
AWARDS WON

**95%**

OF OUR PROJECTS HAVE  
COME IN AT  
OR BELOW BUDGET

**90%**

OF OUR WORK  
IS EDUCATIONAL PROJECTS



# Timeline Overview



- **Pre Bond** ————— **6 - 8 Months**
- **Bond Election** ————— **May 4, 2019**
- **Schematic Design** ————— **2+ Months**
- **Design Development** ————— **3+ Months**
- **Construction Documents** ————— **3 - 4 Months**
- **Bidding/Negotiations** ————— **30 - 60 Days**
- **Construction** ————— **12 - 24 Months**
- **Commissioning** ————— **2 - 4 Weeks**
- **Warranty Period** ————— **1 Year**

# Process Overview



- Architecture
- Engineering
- Construction
  - Low Bid
  - Competitive Sealed Proposal (CSP)
  - Construction Manager at Risk (CMAR)
  - Design-Build
  - CM Agent

# Terms



- **A4LE:** Association for Learning Environments
- **AGC:** Associated General Contractors
- **AIA:** American Institute of Architects
- **Program:** Description of what is needed for design
- **Allowance:** A lump sum allocated to a scope of work
- **Alternate:** A stand alone line item in bid docs

# Pre-Bond Budget Tool



**2019 PROJECTED  
HIGH SCHOOL CONSTRUCTION ESTIMATOR for Nederland ISD**

**GIVENS:**

(\*)  **MAXIMUM STUDENTS**

(\*)  **OPTIMUM STUDENTS**

(\*) Based on avg. 25:1 student/teacher

(\*)  **Classrooms or Instructional Rooms Required**

**TRENDING AREA REQUIREMENTS:**

SQ. FT./ STUDENT  
**Enriched** - "Student-Centered" Programming

SQ. FT./ STUDENT  
**Mainstream** - "Student-Centered" Lite Programming

SQ. FT./ STUDENT  
**Traditional** - Meets Only Traditional State Programming

FACILITY SIZE - (AREA) FORMULA: <i>[EXCLUDES: CANOPIES, SERVICE YARDS, etc.]</i>				
STUDENTS		SQ. FT.		BUILDING SIZE
<input type="text" value="1,700"/>	X	<input type="text" value="180"/>	=	<input type="text" value="306,000"/> GROSS SQ. FT. FACILITY
<input type="text" value="1,700"/>	X	<input type="text" value="170"/>	=	<input type="text" value="289,000"/> GROSS SQ. FT. FACILITY
<input type="text" value="1,700"/>	X	<input type="text" value="160"/>	=	<input type="text" value="272,000"/> GROSS SQ. FT. FACILITY

FACILITY BUDGET - (CONSTRUCTION) FORMULA:		
GIVEN: TREND (\$)		
<input type="text" value="\$297"/> / SQ. FT.	Steel Stadium (1 side only)	[Range based on Current Bid Trends and other Project Specific Factors]
<input type="text" value="\$268"/> / SQ. FT.	Football Field	
<input type="text" value="\$247"/> / SQ. FT.	400 meter 8 lane track	[Spring 2018 AGC Houston & Gulf Coast A4LE Report]
	Lighted Baseball & Softball fields w/ bleachers	
	Baseball & Softball practice fields	
	8 Tennis courts w/ lights	

	TREND (\$)		BLD'G SIZE		\$ BUDGET		\$ BOND BUDGET
ENRICHED	<input type="text" value="\$297"/>	X	<input type="text" value="306,000"/>	=	<input type="text" value="\$90,882,000"/>		\$109,058,400
	<input type="text" value="\$268"/>	X	<input type="text" value="306,000"/>	=	<input type="text" value="\$82,008,000"/>		\$98,409,600
	<input type="text" value="\$247"/>	X	<input type="text" value="306,000"/>	=	<input type="text" value="\$75,582,000"/>		\$90,698,400
MAINSTREAM	<input type="text" value="\$297"/>	X	<input type="text" value="289,000"/>	=	<input type="text" value="\$85,833,000"/>		\$102,999,600
	<input type="text" value="\$268"/>	X	<input type="text" value="289,000"/>	=	<input type="text" value="\$77,452,000"/>		\$92,942,400
	<input type="text" value="\$247"/>	X	<input type="text" value="289,000"/>	=	<input type="text" value="\$71,383,000"/>		\$85,659,600
TRADITIONAL	<input type="text" value="\$297"/>	X	<input type="text" value="272,000"/>	=	<input type="text" value="\$80,784,000"/>		\$96,940,800
	<input type="text" value="\$268"/>	X	<input type="text" value="272,000"/>	=	<input type="text" value="\$72,896,000"/>		\$87,475,200
	<input type="text" value="\$247"/>	X	<input type="text" value="272,000"/>	=	<input type="text" value="\$67,184,000"/>		\$80,620,800

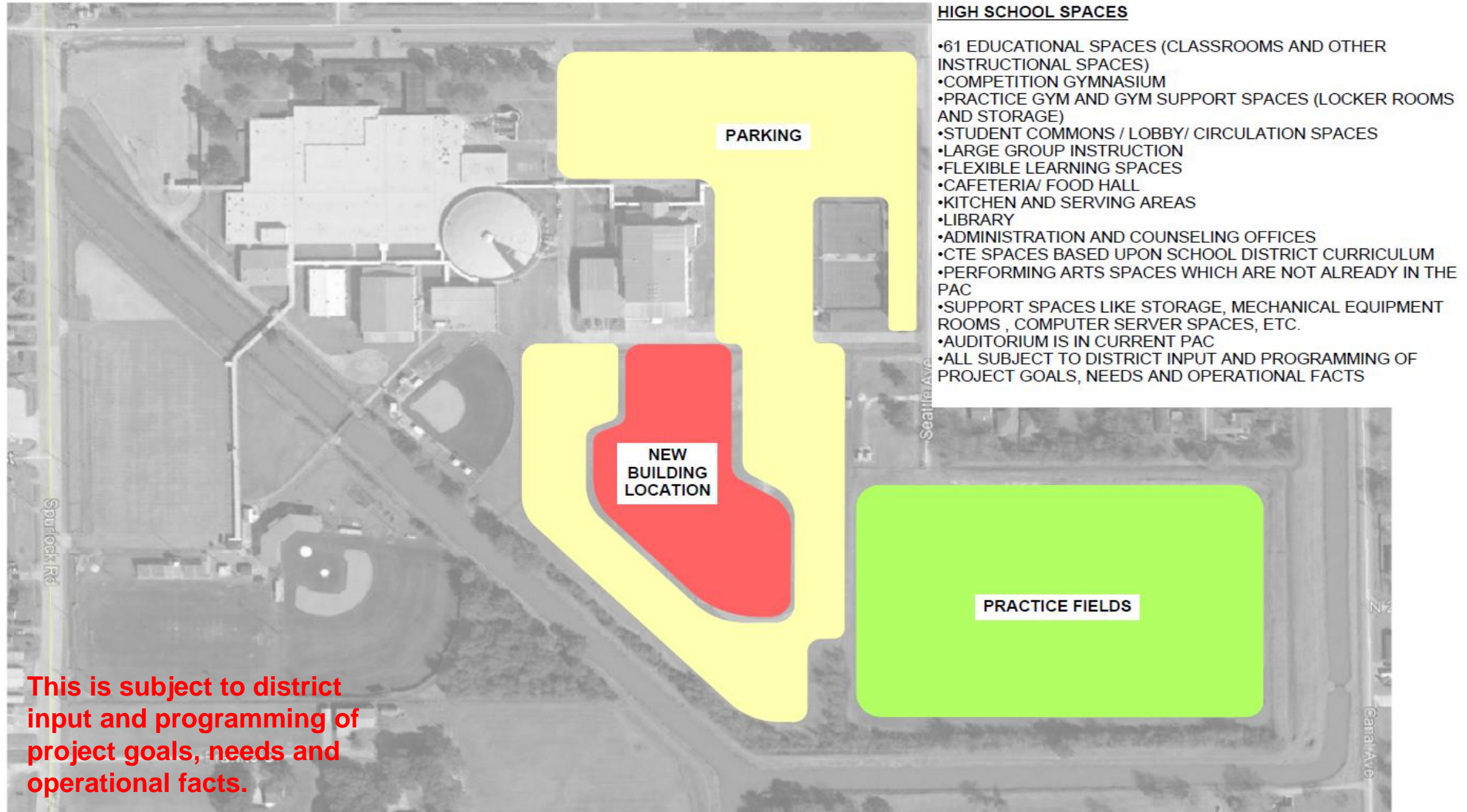


# Where are we and what's next?



- Pre-bond planning and information
  - Meetings
  - School tours
- After a successful bond election:
  - Initiate geotechnical brings and surveys
  - Field measure/as built of existing conditions
  - Schedule stakeholder workshops
  - Schedule meetings with AHJs
  - Board review and approval of Schematic Design

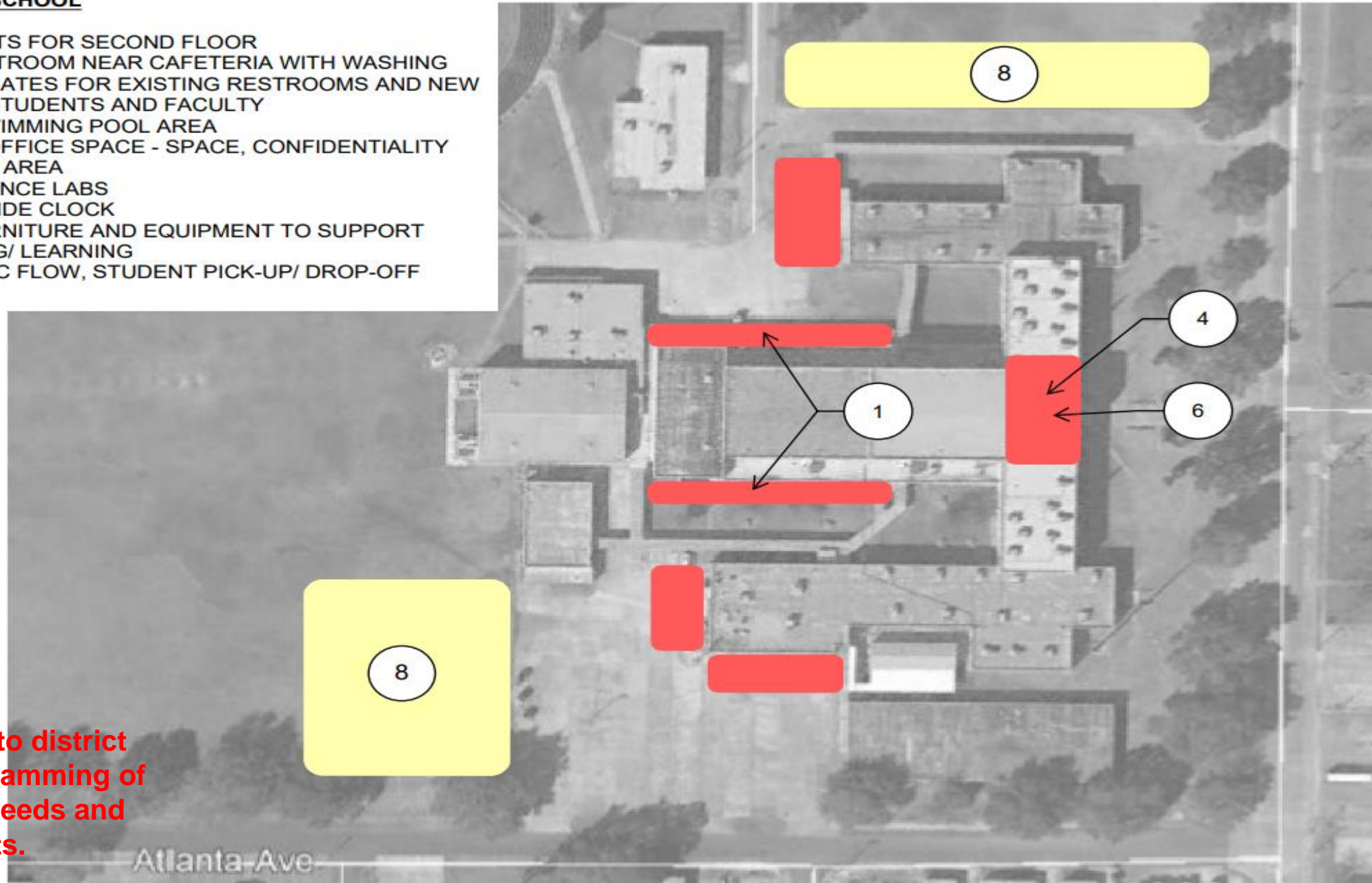
# New Nederland High School



# Central Middle School

## CENTRAL MIDDLE SCHOOL

1. EMERGENCY EXITS FOR SECOND FLOOR
2. ADDITIONAL RESTROOM NEAR CAFETERIA WITH WASHING STATIONS AND UPDATES FOR EXISTING RESTROOMS AND NEW RESTROOMS FOR STUDENTS AND FACULTY
3. ADA LIFT FOR SWIMMING POOL AREA
4. REDESIGN FOR OFFICE SPACE - SPACE, CONFIDENTIALITY ISSUES, UTILITY OF AREA
5. ADDITIONAL SCIENCE LABS
6. REPAIR OF OUTSIDE CLOCK
7. CLASSROOM FURNITURE AND EQUIPMENT TO SUPPORT FLEXIBLE TEACHING/ LEARNING
8. IMPROVE TRAFFIC FLOW, STUDENT PICK-UP/ DROP-OFF AREAS



**This is subject to district input and programming of project goals, needs and operational facts.**



# C.O. Wilson Middle School

## C.O. WILSON

1. ADDITIONAL SCIENCE LABS
2. TECHNOLOGY
3. UPDATES FOR EXISTING RESTROOMS, NEW STUDENT RESTROOMS - SAME FOR FACULTY RESTROOMS
4. REDESIGN FOR OFFICE SPACE - SPACE, CONFIDENTIALITY ISSUES, UTILITY OF AREA
5. CLASSROOM FURNITURE AND EQUIPMENT TO SUPPORT FLEXIBLE TEACHING/ LEARNING
6. IMPROVE AND SEPARATE BUS TRAFFIC AND STUDENT PICK-UP/ DROP-OFF AREAS



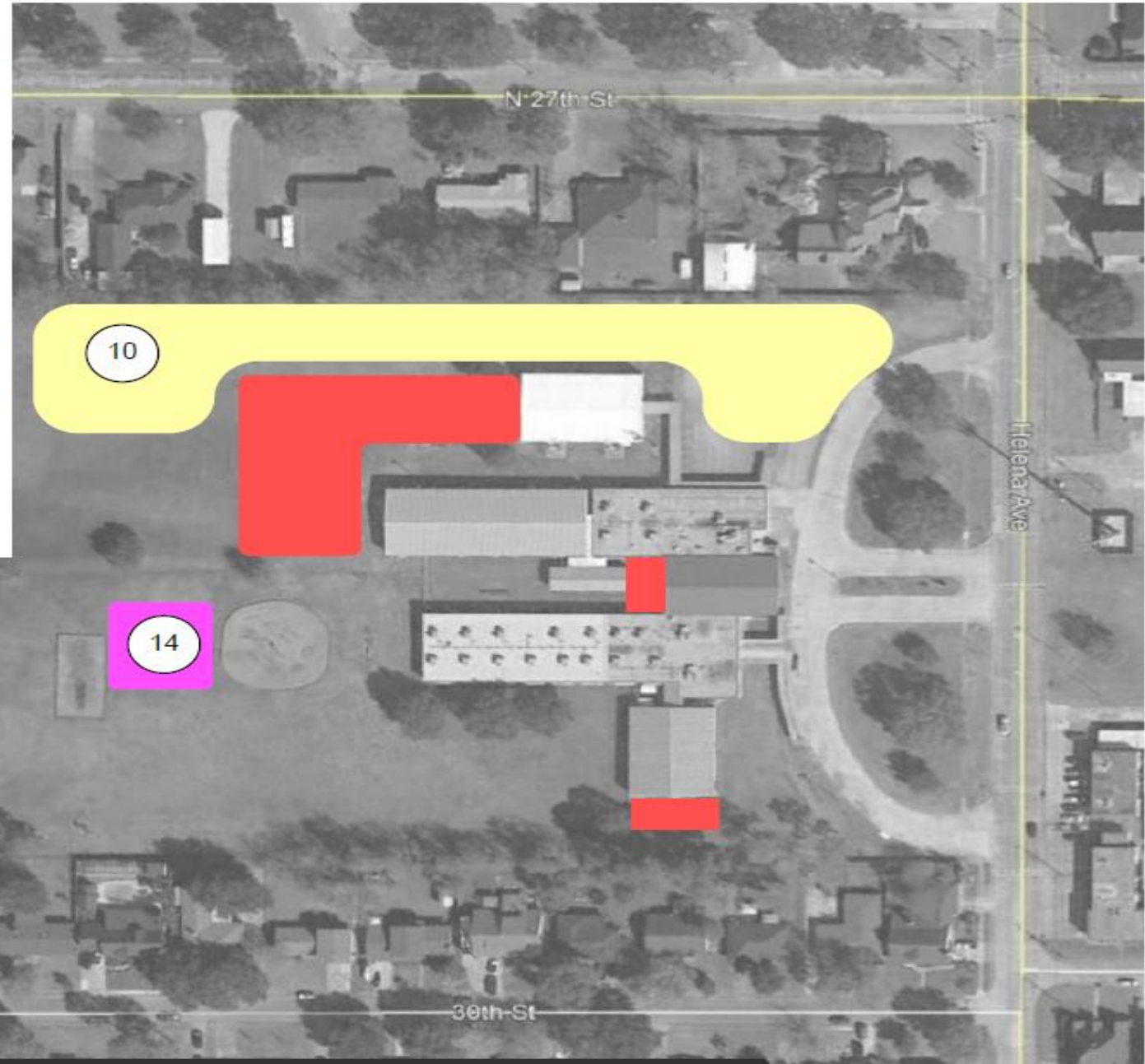


# Helena Park Elementary

*Committed to Excellence*

## HELENA PARK ELEMENTARY

1. CLASSROOM SPACE FOR 5TH GRADE , PROGRAMS THAT NEED A CLASSROOM THAT CURRENTLY ARE SHARING WITH OTHER PROGRAMS, ETC., WILL EQUATE TO 20 ADDITIONAL CLASSROOMS AND SUPPORT SERVICES - RESTROOMS, ETC. (OT, PT, ETC. STUDENTS CURRENTLY RECEIVING SERVICES IN HALLWAY)
2. RENOVATE EXISTING RESTROOMS AND ADD ADDITIONAL RESTROOMS - STUDENTS AND FACULTY
3. PLUMBING ISSUES NEED TO BE RESOLVED
4. INCREASE SIZE OF CAFETERIA AND KITCHEN
5. INCREASE SIZE OF GYM
6. FACILITY IMPROVEMENT FOR STUDENT PICK-UP/ DROP-OFF AREAS
7. FURNITURE AND EQUIPMENT TO SUPPORT FLEXIBLE TEACHING AND LEARNING
8. ADDITIONAL STORAGE IS NEEDED
9. FLEXIBLE TEACHING SPACES ARE NEEDED
10. PARKING EXPANSION
11. OFFICE AREA NEEDS TO BE REDESIGNED WITH ADDITIONAL SPACE
12. HVAC WORK IS NEEDED IN OFFICE AREA
13. EXPAND MUSIC ROOM
14. A NEW PLAYGROUND IS NEEDED



**This is subject to district input and programming of project goals, needs and operational facts.**



1. CLASSROOM SPACE FOR 5th GRADE, OT, PT, CONTENT MASTERY, REPLACE PORTABLE BUILDINGS WITH CLASSROOMS, DYSLEXIA, SPEECH, DSL, SPACE FOR DIAGNOSTICIANS, BEHAVIOR ROOM (INTERVENTION), FUTURE GROWTH, ETC., WILL EQUATE TO 22 ADDITIONAL CLASSROOMS AND SUPPORT SERVICES
2. RENOVATE EXISTING RESTROOMS AND ADD ADDITIONAL RESTROOMS - STUDENTS AND FACULTY
3. ADA ACCOMMODATIONS - SIZE OF DOOR OPENINGS, OFFICES, LIBRARY, ETC.
4. CAFETERIA AND KITCHEN EXPANSION
5. FURNITURE AND EQUIPMENT TO SUPPORT FLEXIBLE TEACHING AND LEARNING
6. ADDITIONAL RESTROOM NEAR GYM, EXPAND SIZE OF GYM
7. INADEQUATE PARKING FOR STAFF AND VISITORS
8. FACILITY IMPROVEMENT FOR STUDENT PICK-UP/ DROP-OFF AREAS
9. PLUMBING ISSUES
10. ADDITIONAL STORAGE NEEDED
11. P.A. SYSTEM NEEDS TO BE REPLACED
12. CAMPUS NEEDS A MARQUEE
13. PLAYGROUND IS INADEQUATE - A NEW PLAYGROUND IS NEEDED
14. EXPAND MUSIC ROOM

**This is subject to district input and programming of project goals, needs and operational facts.**



# Hillcrest Elementary

## HILLCREST ELEMENTARY

1. CAFETERIA EXPANSION
2. KITCHEN EXPANSION
3. NEW MUSIC ROOM
4. CONNECT GYM TO MAIN BUILDING
5. REDESIGN AND ADD SPACE TO FRONT OFFICE
6. NEED MEETING ROOMS FOR CONFERENCES
7. NEED TUTORING ROOMS
8. CLASSROOM ADDITION OF 18 CLASSROOMS - STUDENT GROWTH, PROGRAMS SHARING, REPLACE PORTABLE BUILDINGS, ETC.
9. ADDITIONAL PARKING IS NEEDED
10. IMPROVE STUDENT PICK-UP/ DROP-OFF AREAS
11. NEED RESTROOM IMPROVEMENTS TO CURRENT RESTROOMS, BUILD ADDITIONAL RESTROOMS FOR STUDENTS AND FACULTY
12. PLAYGROUND EQUIPMENT FOR 5th GRADERS
13. BUILDING HAS PLUMBING ISSUES
14. TWO SCIENCE LABS ARE NEEDED
15. PA SYSTEM
16. SHELF SPACE FOR LIBRARY
17. ADDITIONAL ROOM NEEDED FOR NURSES STATION
18. BOOKROOM AND STORAGE ARE NEEDED
19. A NEW COMMUNICATIONS SYSTEMS IS NEEDED

**This is subject to district input and programming of project goals, needs and operational facts.**

S 27th St

2019年12月12日

ADDITIONAL

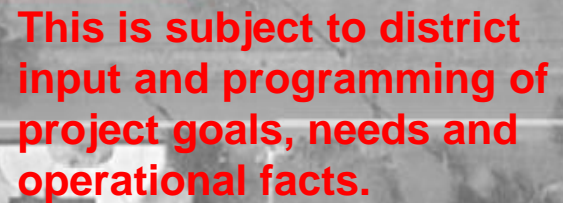
5

2

3

8

100 Ave



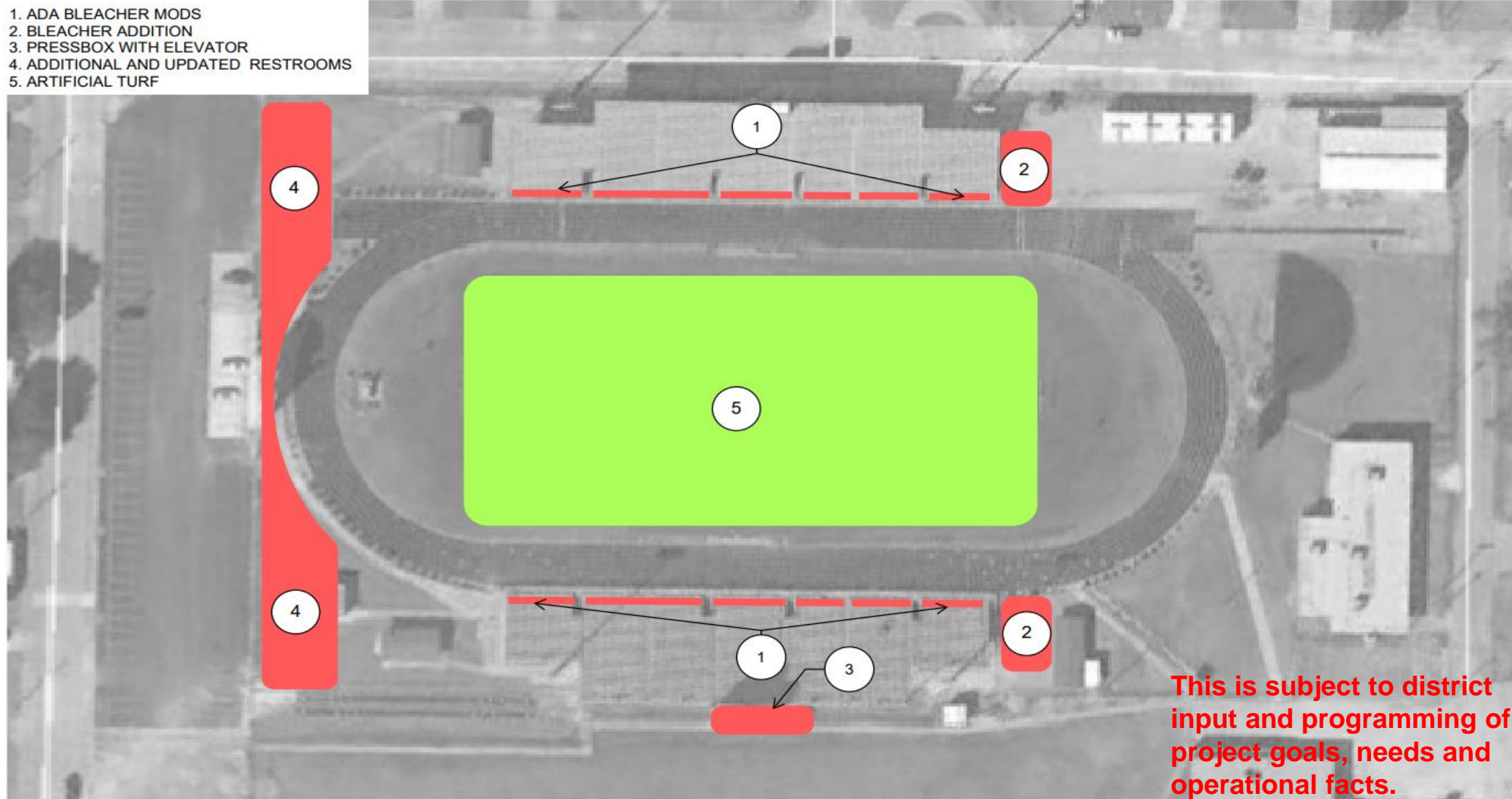


# Bulldog Stadium

*Committed to Excellence*

## STADIUM

1. ADA BLEACHER MODS
2. BLEACHER ADDITION
3. PRESSBOX WITH ELEVATOR
4. ADDITIONAL AND UPDATED RESTROOMS
5. ARTIFICIAL TURF



**This is subject to district input and programming of project goals, needs and operational facts.**

# Where can we get updated information about the bond issue?



- The most reliable place to get updated bond issue information is the school district website.
- **A section of the website is being devoted to “Bond 2019” and new information will be added to this section on a regular basis.**
- If you think of questions after this information session, you may send them to Rene’ Latiolais at [rlatiolais@nederlandisd.org](mailto:rlatiolais@nederlandisd.org).

# A Final Thought



As a representative of the school district I cannot ask you to vote for the bond issue. I can ask you to study the issue, ask as many questions as you need, and then **vote in the election on May 4th.**

If you are interested in voting during the early voting period, please check the district website for early voting information. **You must register to vote by April 4th.**